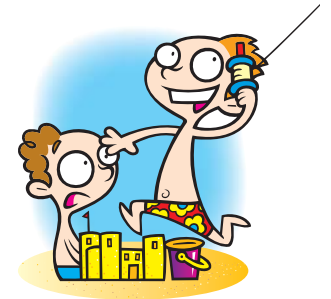




# SAVE

## Summer Casa Vacation

at Isle of Palms, SC



Great Discounts – Every Property is On The Beach!

[www.sccasa.com](http://www.sccasa.com)

Call Resort Quest 866-896-8030 and use Promo Code **WEB-AWV2**



**Casa Banana**

914 Ocean Boulevard

Theme decorated 5,000 sf, 6BR, 7½ bath home (sleeps 20), swimming pool, kiddy pool, theme bedrooms, game room with pool table, cable TV in every bedroom, and FREE wireless internet.



**Casa Flamingo**

912 Ocean Boulevard

Theme decorated 4,500 sf, 8BR, 6½ bath home (sleeps 20), swimming pool, kiddy pool, theme bedrooms, FREE wireless internet, cable TV in every bedroom and game room.



**Casa Margarita**

904 Ocean Boulevard

Theme decorated 5,100 sf, 10BR, 10½ bath home (sleeps 22), with swimming pool, FREE wireless internet, game room with pool table, cable TV in every bedroom!



**Casa Condo**

303 Dunescape Villas

Theme decorated 1,500 sf, 3BR, 3 bath condo (sleeps 8), theme bedrooms, swimming pool, FREE wireless internet, four cable TVs, and a jacuzzi.

(Casa Banana, Flamingo and Condo are all next door to each other!)

[www.sccasa.com](http://www.sccasa.com)

# Rates



## Casa Margarita

904 Ocean Blvd.

10 Theme Bedrooms – 3K, 8Q, 1T,  
2 Sofa Sleepers (IQ, IT), Sleeps 22,  
10.5 Bathrooms, Swimming Pool  
FREE Internet, 11 Cable TVs

| Season                                       | Peak Rate | Weekly Rate | YOU SAVE | Min. Stay | Daily Rates | Turn Day |
|--|-----------|-------------|----------|-----------|-------------|----------|
| Late Summer (8/13/2011-8/31/2011)            | "         | \$7,917     | \$5,983  | 3         | \$1,654     | —        |
| Labor Day (9/1/2011-9/11/2011)               | "         | \$7,917     | \$5,983  | 3         | \$1,654     | —        |
| Fall (9/12/2011-10/16/2011)                  | "         | \$6,102     | \$7,798  | 3         | \$1,193     | —        |
| Winter (10/17/2011-11/16/2011)               | "         | \$4,434     | \$9,466  | 3         | \$1,013     | —        |
| Thanksgiving (11/17/2011-11/25/2011)         | "         | \$6,102     | \$7,798  | 7         | —           | —        |
| Winter (11/26/2011-12/18/2011)               | "         | \$4,434     | \$9,466  | 3         | \$1,013     | —        |
| Christmas/New Year's (12/19/2011-12/31/2011) | "         | \$6,102     | \$7,798  | 7         | —           | —        |
| Winter (1/1/2012-3/1/2012)                   | \$15,605  | \$4,835     | \$10,770 | 3         | \$1,196     | —        |
| Spring (3/2/2012-4/6/2012)                   | "         | \$7,139     | \$8,466  | 3         | \$1,396     | —        |
| Easter (4/7/2012-4/14/2012)                  | "         | \$8,526     | \$7,079  | 3         | \$1,491     | —        |
| Spring (4/15/2012-5/10/2012)                 | "         | \$7,139     | \$8,466  | 3         | \$1,196     | —        |
| Early Summer (5/11/2012-5/31/2012)           | "         | \$8,569     | \$7,036  | 3         | \$1,692     | —        |
| Summer (6/1/2012-8/9/2012)                   | \$15,605  | \$14,825    | \$780    | 7         | —           | Saturday |
| Late Summer (8/10/2012-8/28/2012)            | "         | \$8,512     | \$7,093  | 3         | \$1,751     | —        |
| Labor Day (8/29/2012-9/4/2012)               | "         | \$6,593     | \$9,012  | 3         | \$1,751     | —        |
| Fall (9/5/2012-10/18/2012)                   | "         | \$6,593     | \$9,012  | 3         | \$1,290     | —        |
| Winter (10/19/2012-11/16/2012)               | "         | \$4,835     | \$10,770 | 3         | \$1,196     | —        |
| Thanksgiving (11/17/2012-11/24/2012)         | "         | \$6,593     | \$9,012  | 7         | \$1,318     | —        |
| Winter (11/25/2012-12/21/2012)               | "         | \$4,835     | \$10,770 | 3         | \$1,196     | —        |
| Christmas/New Year's (12/22/2012-12/31/2012) | "         | \$6,593     | \$9,012  | 7         | \$1,318     | —        |



## Casa Flamingo

912 Ocean Blvd.

8 Theme Bedrooms – 7Q, 3T, 3 Sleepers  
Sleeps 20, 6.5 Bathrooms  
Swimming Pool – Kiddy Pool  
FREE Internet, 9 Cable TVs

| Season                                       | Peak Rate | Weekly Rate | YOU SAVE | Min. Stay | Daily Rates | Turn Day |
|--|-----------|-------------|----------|-----------|-------------|----------|
| Late Summer (8/13/2011-8/31/2011)            | "         | \$7,168     | \$5,148  | 3         | \$1,490     | —        |
| Labor Day (9/1/2011-9/11/2011)               | "         | \$7,168     | \$5,148  | 3         | \$1,490     | —        |
| Fall (9/12/2011-10/16/2011)                  | "         | \$4,693     | \$7,623  | 3         | \$1,054     | —        |
| Winter (10/17/2011-11/16/2011)               | "         | \$3,791     | \$8,525  | 3         | \$946       | —        |
| Thanksgiving (11/17/2011-11/25/2011)         | "         | \$4,693     | \$7,623  | 7         | \$1,054     | —        |
| Winter (11/26/2011-12/18/2011)               | "         | \$3,791     | \$8,525  | 3         | \$946       | —        |
| Christmas/New Year's (12/19/2011-12/31/2011) | "         | \$4,693     | \$7,623  | 7         | —           | —        |
| Winter (1/1/2012-3/1/2012)                   | \$12,338  | \$3,970     | \$8,368  | 3         | \$996       | —        |
| Spring (3/2/2012-4/6/2012)                   | "         | \$5,242     | \$7,096  | 3         | \$1,261     | —        |
| Easter (4/7/2012-4/14/2012)                  | "         | \$6,227     | \$6,111  | 3         | \$1,329     | —        |
| Spring (4/15/2012-5/10/2012)                 | "         | \$5,242     | \$7,096  | 3         | \$1,261     | —        |
| Early Summer (5/11/2012-5/31/2012)           | "         | \$7,209     | \$5,129  | 3         | \$1,681     | —        |
| Summer (6/1/2012-8/9/2012)                   | \$12,338  | \$11,968    | \$370    | 7         | —           | Saturday |
| Late Summer (8/10/2012-8/28/2012)            | "         | \$7,554     | \$4,784  | 3         | \$1,587     | —        |
| Labor Day (8/29/2012-9/4/2012)               | "         | \$7,554     | \$4,784  | 3         | \$1,587     | —        |
| Fall (9/5/2012-10/18/2012)                   | "         | \$5,104     | \$7,234  | 3         | \$1,154     | —        |
| Winter (10/19/2012-11/16/2012)               | "         | \$3,978     | \$8,360  | 3         | \$996       | —        |
| Thanksgiving (11/17/2012-11/24/2012)         | "         | \$5,104     | \$7,234  | 7         | \$1,189     | —        |
| Winter (11/25/2012-12/21/2012)               | "         | \$3,978     | \$8,360  | 3         | \$996       | —        |
| Christmas/New Year's (12/22/2012-12/31/2012) | "         | \$5,104     | \$7,234  | 7         | \$1,189     | —        |



## Casa Banana

914 Ocean Blvd.

6 Theme Bedrooms – 2K, 6Q, 6 Sleepers  
Sleeps 20, 7.5 Bathrooms  
Swimming Pool – Kiddy Pool  
FREE Internet, 8 Cable TVs

| Season                                       | Peak Rate | Weekly Rate | YOU SAVE | Min. Stay | Daily Rates | Turn Day |
|--|-----------|-------------|----------|-----------|-------------|----------|
| Late Summer (8/13/2011-8/31/2011)            | "         | \$7,168     | \$5,148  | 3         | \$1,490     | —        |
| Labor Day (9/1/2011-9/11/2011)               | "         | \$7,168     | \$5,148  | 3         | \$1,490     | —        |
| Fall (9/12/2011-10/16/2011)                  | "         | \$4,693     | \$7,623  | 3         | \$1,054     | —        |
| Winter (10/17/2011-11/16/2011)               | "         | \$3,791     | \$8,525  | 3         | \$946       | —        |
| Thanksgiving (11/17/2011-11/25/2011)         | "         | \$4,693     | \$7,623  | 7         | \$1,054     | —        |
| Winter (11/26/2011-12/18/2011)               | "         | \$3,791     | \$8,525  | 3         | \$946       | —        |
| Christmas/New Year's (12/19/2011-12/31/2011) | "         | \$4,693     | \$7,623  | 7         | —           | —        |
| Winter (1/1/2012-3/1/2012)                   | \$12,338  | \$3,970     | \$8,368  | 3         | \$996       | —        |
| Spring (3/2/2012-4/6/2012)                   | "         | \$5,242     | \$7,096  | 3         | \$1,261     | —        |
| Easter (4/7/2012-4/14/2012)                  | "         | \$6,227     | \$6,111  | 3         | \$1,329     | —        |
| Spring (4/15/2012-5/10/2012)                 | "         | \$5,242     | \$7,096  | 3         | \$1,261     | —        |
| Early Summer (5/11/2012-5/31/2012)           | "         | \$7,209     | \$5,129  | 3         | \$1,681     | —        |
| Summer (6/1/2012-8/9/2012)                   | \$12,338  | \$11,968    | \$370    | 7         | —           | Saturday |
| Late Summer (8/10/2012-8/28/2012)            | "         | \$7,554     | \$4,784  | 3         | \$1,587     | —        |
| Labor Day (8/29/2012-9/4/2012)               | "         | \$7,554     | \$4,784  | 3         | \$1,587     | —        |
| Fall (9/5/2012-10/18/2012)                   | "         | \$5,104     | \$7,234  | 3         | \$1,154     | —        |
| Winter (10/19/2012-11/16/2012)               | "         | \$3,978     | \$8,360  | 3         | \$996       | —        |
| Thanksgiving (11/17/2012-11/24/2012)         | "         | \$5,104     | \$7,234  | 7         | \$1,189     | —        |
| Winter (11/25/2012-12/21/2012)               | "         | \$3,978     | \$8,360  | 3         | \$996       | —        |
| Christmas/New Year's (12/22/2012-12/31/2012) | "         | \$5,104     | \$7,234  | 7         | \$1,189     | —        |



## Casa Condo

303 Dunescape Villas

3 Theme Bedrooms – 3Q, 1 Sleeper  
Sleeps 8, 3 Bathrooms  
Jacuzzi – Swimming Pool  
FREE Internet, 4 Cable TVs

| Season                                       | Peak Rate | Weekly Rate | YOU SAVE | Min. Stay | Daily Rates | Turn Day |
|--|-----------|-------------|----------|-----------|-------------|----------|
| Late Summer (8/13/2011-8/31/2011)            | "         | \$1,673     | \$1,650  | 3         | \$398       | —        |
| Labor Day (9/1/2011-9/11/2011)               | "         | \$1,673     | \$1,650  | 3         | \$405       | —        |
| Fall (9/12/2011-10/16/2011)                  | "         | \$1,491     | \$1,832  | 3         | \$293       | —        |
| Winter (10/17/2011-11/16/2011)               | "         | \$1,394     | \$1,929  | 3         | \$290       | —        |
| Thanksgiving (11/17/2011-11/25/2011)         | "         | \$1,491     | \$1,832  | 7         | \$293       | —        |
| Winter (11/26/2011-12/18/2011)               | "         | \$1,394     | \$1,929  | 3         | —           | —        |
| Christmas/New Year's (12/19/2011-12/31/2011) | "         | \$1,487     | \$1,836  | 7         | \$301       | —        |
| Winter (1/1/2012-3/1/2012)                   | \$3,790   | \$1,471     | \$2,319  | 3         | \$325       | —        |
| Spring (3/2/2012-4/6/2012)                   | "         | \$1,776     | \$2,014  | 3         | \$383       | —        |
| Easter (4/7/2012-4/14/2012)                  | "         | \$2,080     | \$1,710  | 3         | \$440       | —        |
| Spring (4/15/2012-5/10/2012)                 | "         | \$1,776     | \$2,014  | 3         | \$383       | —        |
| Early Summer (5/11/2012-5/31/2012)           | "         | \$1,871     | \$1,919  | 3         | \$422       | —        |
| Summer (6/1/2012-8/9/2012)                   | \$3,790   | \$3,573     | \$217    | 7         | —           | Saturday |
| Late Summer (8/10/2012-8/28/2012)            | "         | \$1,760     | \$2,030  | 3         | \$448       | —        |
| Labor Day (8/29/2012-9/4/2012)               | "         | \$1,760     | \$2,030  | 3         | \$459       | —        |
| Fall (9/5/2012-10/18/2012)                   | "         | \$1,580     | \$2,210  | 3         | \$347       | —        |
| Winter (10/19/2012-11/16/2012)               | "         | \$1,471     | \$2,319  | 3         | \$340       | —        |
| Thanksgiving (11/17/2012-11/24/2012)         | "         | \$1,580     | \$2,210  | 7         | \$347       | —        |
| Winter (11/25/2012-12/21/2012)               | "         | \$1,471     | \$2,319  | 3         | \$318       | —        |
| Christmas/New Year's (12/22/2012-12/31/2012) | "         | \$1,575     | \$2,215  | 7         | \$374       | —        |